

JENEsys[®] Edge[™] 100

USER GUIDE ADDENDUM



JENE-EG100

Trademarks

Lynxspring[®], JENEsys[®] and Onyx[®] are registered trademarks of Lynxspring, Inc.

JENEsys Edge[™] and Helixx[™] are trademarks of Lynxspring, Inc.

Niagara Framework[®] is a registered trademarks of Tridium, Inc.

Other brands and product names mentioned in this manual may be trademarks or registered trademarks of their respective companies and are hereby acknowledged.

Copyright Notice

Copyright © 2016, Lynxspring, Inc.
All rights reserved.

This document contains proprietary information which is protected by copyright. No part of this document may be copied, photocopied, reproduced, translated, or converted to any electronic or machine-readable form in whole or in part without prior written approval of Lynxspring, Inc.

Disclaimer

NO WARRANTY. This technical documentation is being delivered to you AS-IS, and Lynxspring makes no warranty as to its accuracy or use. Any use of the technical documentation or the information contained therein is at the risk of the user. Documentation may include technical or other inaccuracies or typographical errors. Lynxspring reserves the right to make changes in this document without prior notice, and the reader should in all cases consult Lynxspring to determine whether any such changes have been made. The information in this publication does not represent a commitment on the part of Lynxspring.

Lynxspring shall not be liable for incidental or consequential damages resulting from the furnishing, performance, or use of this material.

This guide contains links and references to third-party websites that are not under the control of Lynxspring, and Lynxspring is not responsible for the content of any reference material or linked websites. If you access a third party website mentioned in this guide, then you do so at your own risk. Lynxspring provides these links only as a convenience, and the inclusion of the link does not imply that Lynxspring endorses or accepts any responsibility for the content on those third-party sites.

Lynxspring, Inc.
1210 NE Windsor Drive
Lee's Summit, MO 64086
P 816.347.3500 F 816.437.0780

<http://www.lynxspring.com>

Niagara Documentation

JACE Start Up Addendum

Please note the following helpful highlights in this User Guide Addendum outlining key differences to the Niagara documentation in regards to operation of your JENEsys-Edge 100 (*docJaceStartup*). Referenced Niagara documentation is included in the installations of ProBuilder™ or Niagara Framework® and is typically located in a directory on the user's PC, similar to:

C:\JENEsys\JENEsys-3.8.111\docs

Pg. 3

IP Address:

- ✓ The JENEsys-Edge 100 is shipped with a default address in the range of: **192.168.1.12n**, like the JACE-3E, JACE-6E, JACE-2/6 series.

Pg. 4

Step 3:

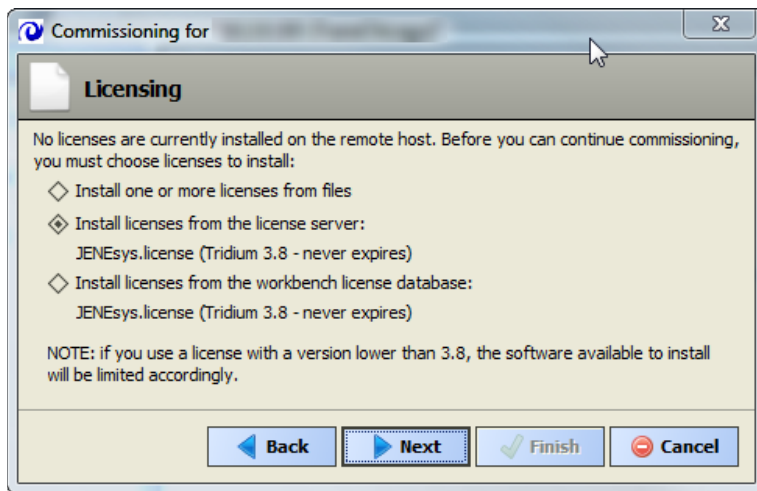
- ✓ Attach the cable to the only Ethernet connector on the JENEsys-Edge 100.

Note: Alternative to Re-Assigning PC's IP Address

- ✓ With the JENEsys-Edge 100 having one Ethernet connector, the alternative of configuring a second NIC is inapplicable.

Pg. 8

Figure 4: Please refer to this screen below:



Pg. 9

Figure 6: Please refer to this screen below:

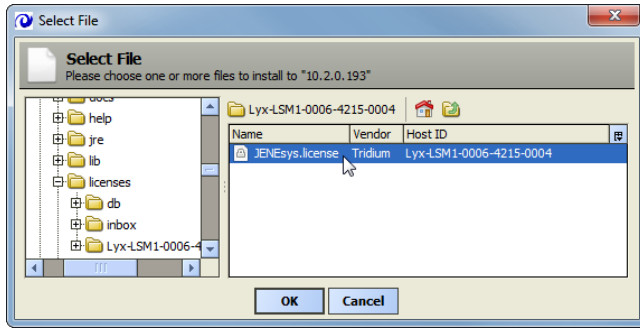
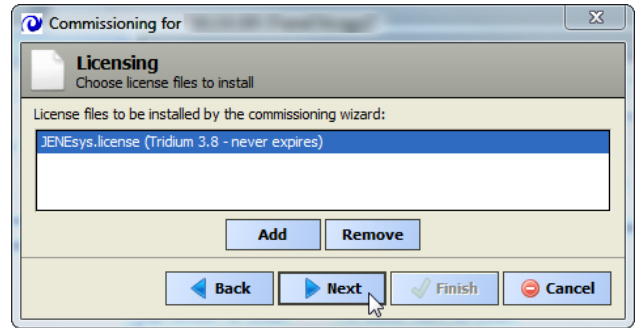


Figure 7: Please refer to this screen below:

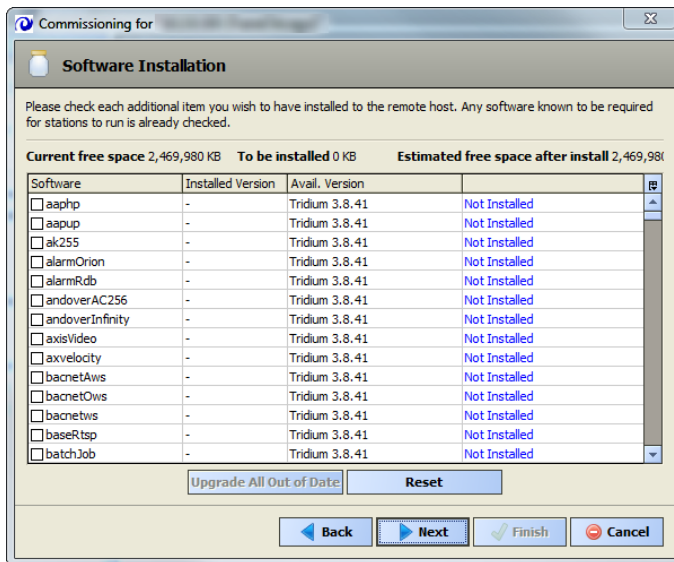


Pg. 12

Select Modules:

- ✓ Core modules may already be installed on the JENEsys-Edge 100 and so will not appear in the Software Manager as required to install.

Figure 15: Please refer to this screen below:

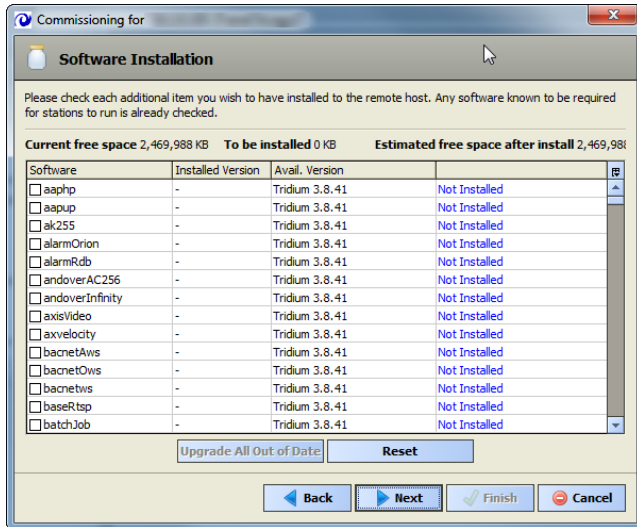


Note:

- ✓ The JENEsys-Edge 100 is not a "Hotspot" host and so the crypto module is necessary for SSL.

Pg. 13

Figure 16: Please refer to this screen below:



Pg. 14

Distribution File Installation:

- ✓ The JENEsys-Edge 100 may already have distribution files installed.

2nd Note:

- ✓ The JENEsys-Edge 100 has one Ethernet connector.
- ✓ An additional WiFi option adds a second interface.

Pg. 15

2nd & 3rd Notes:

- ✓ The JENEsys-Edge 100 has one Ethernet port–LAN1.

Pg. 16

Caution:

- ✓ The JENEsys-Edge 100 is not equipped with a serial connector. Shell access is available through the Mini-USB port.

Pg. 34

System Shell [About JACE serial shell mode; items needed for serial system shell; using serial system shell; and about the JACE system shell menu]:

- ✓ Refer to JENEsys-Edge 100 **SYSTEM SHELL ADDENDUM** for items needed and how to use the JENEsys-Edge 100 SYSTEM SHELL.

Niagara Documentation

System Shell Addendum

Please note helpful highlights outlining key differences to the Niagara documentation in regards to operation of your JENEsys-Edge 100 (*docJaceStartup*) below:

Pg. 34

System Shell:

- ✓ The JENEsys-Edge 100 SYSTEM SHELL is accessible using the Mini USB port, rather than an RS-232 port.

Items Needed for Serial System Shell:

- ✓ The JENEsys-Edge 100 requires only a Mini-USB to USB cable, Ethernet cable, and terminal emulation software installed on your PC.

Pg. 35

Items Needed for Serial System shell (*cont.*):

- ✓ The JENEsys-Edge 100 does not use a jumper.

To Connect to the JACE Serial System Shell:

- ✓ Set the Bits Per Second to 115200 for the JENEsys-Edge 100.
- ✓ Steps 6-7 are inapplicable to the JENEsys-Edge 100.
- ✓ In Step 10, the movement of a jumper is inapplicable to the JENEsys-Edge 100.

Pg. 36

About the JACE System Shell Menu:

- ✓ The Shell menu of the JENEsys-Edge 100 does not include the ability to enable/disable FTP and Telenet.

Niagara Documentation

Platform Guide Addendum

Please note helpful highlights outlining key differences to the Niagara documentation in regards to operation of your JENEsys-Edge 100 (*docPlatform*) below:

Pg. 17

Platform Connection Session Info:

- ✓ The JENEsys EG-100 does not support SSL as of the date this document was published.

Pg. 40

Downgrading a JACE:

- ✓ While there is a clean dist file for the JENEsys-Edge 100 to restore it to a factory-like default, downgrading is inapplicable due to the requirement of build Niagara 3.8.111.

Pg. 41

1st Note:

- ✓ The clean dist file for the JENEsys-Edge 100 is only available in LynxSpring's branded Workbench—ProBuilder.

2nd Note:

- ✓ The JENEsys-Edge 100 requires build 3.8.111, as of the date this document was published.

Pg. 43

Upgrading a JACE:

- ✓ At the time of publication, upgrading is inapplicable due to the requirement of build 3.8.111.

Pg. 47

GPRS Modem Configuration:

- ✓ The JENEsys-Edge 100 does not support GPRS.

Pg. 95

WiFi Configuration:

- ✓ At the time of publication of this document, the JENEsys-Edge 100 does not support WiFi.

Pg. 145

Driver Types:

- ✓ Some drivers are not supported by the JENEsys-Edge 100.