



Edge to Enterprise



OPERATIONAL TECHNOLOGY DATA MANAGMENT

INDEPENDENT DATA LAYER PLATFORM



One Platform.
Many Possibilities.



Edge to Enterprise

BY LYNXSPRING

EDGE-TO-CLOUD DATA MANAGEMENT

E2E is a comprehensive edge-to-Cloud operational technology (OT) platform designed to securely connect with building systems and equipment. It collects, aggregates, normalizes and visualizes data within a centralized independent data layer (IDL), providing a unified data repository and intuitive user interface. E2E also offers robust device management capabilities.

DATA INTEGRITY, CAPTURE & MODELING

By addressing the complexities of accessing, cleansing, and organizing OT data from multiple systems, equipment and devices, E2E consolidates your data. This enables real-time data analysis, monitoring, and control of analytics. Delivered as a service, E2E creates a seamless edge-to-Cloud experience facilitating applications like energy optimization, digital twins, predictive analytics, fault detection, diagnostics, and AI-driven insights.

ADAPTIVE CONNECTIVITY

E2E's adaptive connectivity supports integration with nearly any system, device or equipment through a single broker, standardizing data for rapid transformation, interoperability, and enhanced integration. With unmatched openness and interoperability, E2E empowers organizations with advanced data management solutions.



COLLECT



AGGREGATE



NORMALIZE



VISUALIZE YOUR DATA



KEY BENEFITS

E2E solves the challenge of transforming raw operational data into usable relational data with time, metadata, and serialization stamps. It unifies building OT data from disparate systems into an extensive enterprise platform. Supporting seamless integration with third-party hardware, software, and Cloud systems, delivering unparalleled flexibility and compatibility across the OT ecosystem.

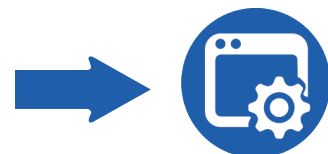
CORE CAPABILITIES

- Edge-to-Cloud Connectivity
- Secure, Scalable, and Flexible Infrastructure
- Unified User Interface and Centralized Management
- Data Structure, Normalization, and Standardization
- Data Curation, Modeling, and Governance
- Interoperability and Control
- Remote Device Management
- Data Visualization and Analytics
- Open API for Custom Integration
- Storage Repository for Data Ownership
- Support for Multiple Data Types
- SOC 2 Compliance

E2E delivers the full suite of tools needed for deploying smart, connected facility enterprises.

E2E CONNECTORS

Lynxspring's E2E Connectors serve as communication interfaces, enabling secure and efficient data exchange between edge devices and enterprise systems. Available as embedded features or services, these connectors are ideal for smart buildings, industrial automation, and enterprise integration.



Third-Party Apps



CONNECTOR TYPES

JENESYS EDGE® CONNECTOR™

Embedded within Lynxspring's JENEsys Edge® controllers (models 634, 534, 434, 514, 414, and VAV), this connector provides MQTT/TCP-based connectivity for edge-to-Cloud data exchange. It supports both single and multi-device connections via the E2E Connexxion® Cloud with detailed device profiles for advanced integration.

SITE CONNECTOR™

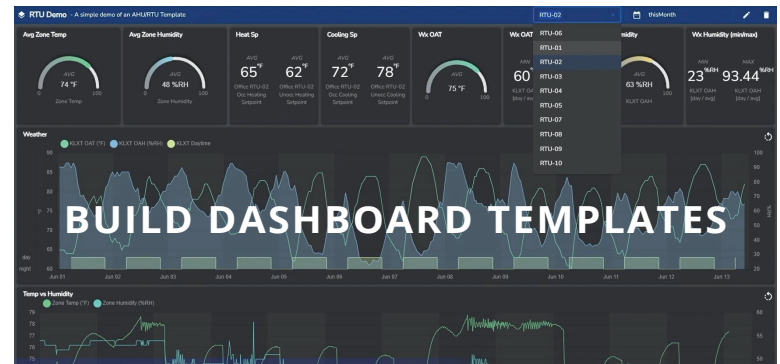
This connector consolidates data traffic from multiple devices within a building, optimizing network management by providing a single exit point for data flow.

JENESYS® NIAGARA CONNECTOR™

A licensed Niagara service for JENEsys PC-9000, this connector offers seamless enterprise data integration with compatible Niagara software. Available exclusively from Lynxspring, it ensures smooth interoperability with enterprise-level systems.

WHO BENEFITS FROM E2E?

- Enterprise Organizations
- Energy/Utility Companies
- Equipment Manufacturers
- Building Owners/Consultants
- Government/Municipal Agencies
- Data Centers/Financial Institutions
- Facility Managers/System Integrators
- School Districts/University Campuses
- Technology Vendors/Service Providers



BUILD DASHBOARD TEMPLATES

BUILD CUSTOM FILTERS



INTUITIVE DEVICE MANAGER

ADVANCED TAGGING ENGINE



One Platform. Many Possibilities.

1 (877) 649-5969

www.lynxspring.com

www.lynxspring.com/contact-us