

One Platform. Many Possibilities.™

LynxSpring's portfolio of edge-to-enterprise products is engineered with **open protocols**, providing a powerful and secure gateway to trusted, meaningful and open real-time data across your building automation systems.

A **trusted partner** in both **retrofit** projects and **new-build** projects, LynxSpring solutions natively support **open standards**, ensuring interoperable, flexible, and scalable long-term choices. With our Niagara-native **JENEsys Edge® controllers** you can seamlessly integrate with virtually any HVAC system—including boilers, chillers, heat pumps, air handling units, and rooftop units—without locking into proprietary hardware or closed ecosystems.

All **JENEsys®** and **JENEsys Edge®** products are embedded and exhibit the entire **Niagara Framework®**.

With decades of expertise in manufacturing controls, LynxSpring has become a **preferred controls provider**.

JENEsys Edge® controllers are eligible for accreditation under the **Risk Management Framework (RMF)**.

You can also check out our **open NiCS**, **BTL-Certified***, **Made in America***, and **Build America Buy America (BABA)-Qualified*** products including our **JENEsys®**, **JENEsys Edge®**, and **Onyxx®** portfolios.

JENEsys Edge® 600 Series Niagara Controllers

IP Controller with Enhanced Processing Power



JENEsys Edge® 634

niagara⁴

All JENEsys Edge® & JENEsys®
PC-9000 controllers now include
E2E Connector license feature.

JENEsys Edge® 634 is a fully programmable and configurable **Niagara** controller with 34 onboard I/O and options for expansion. Its enhanced processing power and memory capacity set it apart enabling seamless management of **complex applications** and **high-volume integrations**.

- Utilizes a Secure Linux OS and Embedded Niagara
- **Open NiCS**
- Shorter Start Up Times
- **E2E-Ready** and AI-Ready for Future Applications
- Delivers Control Across a Wide Range of **Use Cases**

Note: Add to a **JENE-EG634-N4**, up to a maximum of 8 additional **Onyxx XM** extender modules for up to 306 points.

JENEsys Edge® 500 Series Niagara Controllers

IP Controller



JENEsys Edge® 534

niagara⁴

All JENEsys Edge® & JENEsys®
PC-9000 controllers now include
[E2E Connector](#) license feature.

JENEsys Edge® 534 is a fully programmable IP controller that combines **Niagara**, real-time Linux OS, 34 points of IO on-board, and web server duties into a single device. It delivers edge connectivity, **energy management**, data access and control for plant control, machine-to-machine and IoT applications that require dependable smart edge technology.

- Utilizes Familiar Niagara Software/Programming Tools and Fox Protocol
- Licensing Suited to Take Niagara into Smaller/Price-Sensitive Applications
- [Open NiCS](#) Ensure Flexibility to Make Modifications
- **JENEsys Edge 534 Satisfies IT Security Testing Requirements for GSA**

Note: Add to a [JENE-EG534-N4](#), up to a maximum of 8 additional [Onyx XM](#) extender modules for up to 306 points.

IP Controller with Modem & Wireless Communication



JENEsys Edge® 534 4G LTE

niagara⁴

All JENEsys Edge® & JENEsys®
PC-9000 controllers now include
[E2E Connector](#) license feature.

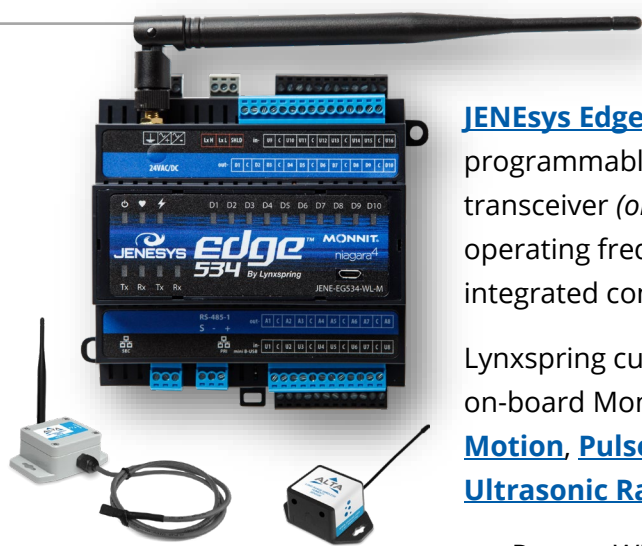
JENEsys Edge® 534 4G LTE is a fully programmable **Niagara** IP controller with 34 IOs, 4G LTE cellular capabilities and **open NiCS**. This BMS controller features NimbeLink's Skywire® LTE CAT 1 embedded cellular modem. It is designed for deployment on the Verizon LTE network and is certified, enabling easy integration and deploy with no further carrier testing requirements.

- Only Compatible with Verizon LTE Networks Within the United States
- Cellular Modem Works with Lynxspring's Easy Data Plan
- Private Wireless Network Powered by Verizon
- Ensure Data Security Through a Virtual Private network (VPN)
- Industry-Standard Ethernet Communications/Segregated Private Network
- Configure Remotely Accessing UI via Local IP Address/Cellular IP Address
- Communicate with Most Types of Equipment
- Forwards IP-Based Traffic to Any Device Providing Reciprocal IP Interfaces

Note: Add to a [JENE-EG534-4GLTE-N4](#), up to a maximum of 8 additional [Onyx XM](#) extender modules for up to 306 points.

JENEsys Edge® 500 Series Niagara Controllers (cont'd)

Supports 11 Monnit Wireless Sensor Types



JENEsys Edge® 534 with Monnit®

niagara⁴

All JENEsys Edge® & JENEsys®
PC-9000 controllers now include
E2E Connector license feature.

JENEsys Edge® 534 with Monnit® merges all the functionality of an IP programmable Niagara controller with 34IO built in and a **900 MHz** wireless transceiver (*only available in the Americas*), and an **868 MHz** and a **433 MHz** operating frequencies. This open NiCS controller facilitates web service, integrated control, data logging, alarming, analytics, and trending.

Lynxspring currently supports **11 different Monnit sensors** through the on-board Monnit radio including: Button Press, Dry Contact, Humidity, Motion, Pulse Counter, Temperature (Normal & Low), Thermocouple, Tilt, Ultrasonic Ranging, Water Detection sensors.

- Protect Wireless Data Transmission via Monnit's **Encrypt-RF Bank level security**, featuring a 256-bit exchange to establish a global unique key, and an AES-128 CTR for all data messages.
- The JENEsys Edge® 534 with Monnit satisfies all IT Security testing requirements for the **General Services Administration (GSA)**.

Note: Add to a JENE-EG534-WL-M, up to a maximum of 8 additional Onyxx XM extender modules for up to 306 points.

IP Field/Equipment Controller

JENEsys Edge® 514 is a fully programmable and licensed Niagara field and equipment controller with 14 IO on-board. It is an economical open NiCS solution which is ideal for price-sensitive applications, small to mid-sized facilities, multi-site environments, plant, and equipment control such as air handling units, roof top units, boilers, fan coil units, heat pumps and more.

- Runs on Real-Time Linux OS and a Full Niagara Stack
- Fast Processor and Increased Memory Capacity
- Leverages Global Capacity Licensing
- Includes a GUI for Building Internal Graphics
- Easily Integrated into Other Niagara Solutions
- Perfect for Both Retrofit and New Build Projects
- Compatible with Many Niagara Drivers (*i.e., Fox, BACnet, Modbus and OBIX*)

Note: Add to a JENE-EG514-N4, up to a maximum of 8 additional Onyxx XM extender modules for up to 306 points.



JENEsys Edge® 514

niagara⁴

All JENEsys Edge® & JENEsys®
PC-9000 controllers now include
E2E Connector license feature.

JENEsys Edge® 400 Series Niagara Controllers



JENEsys Edge® 434

niagara⁴

All JENEsys Edge® & JENEsys®
PC-9000 controllers now include
E2E Connector license feature.

IP Field/Equipment Controller

JENEsys Edge® 434 is a **Niagara** IP programmable, **open NiCS** controller with 34 IO built in and expandable IO available, delivering edge connectivity, interoperability, data access and analytics for today's buildings, energy management, machine-to-machine applications and IoT environments.

- Fully Programmable Niagara Controller/Niagara Embedded Software
- Supports Niagara License APC-3 (68 points and 3 devices) and APC-2 (34 points and 2 devices)
- Supports Spanning Tree Protocol
- Supports FOX, BACnet IP/MSTP, Modbus TCP/RTU (*client only*), and WEBUI
- Ready to include compatibility with the edge configuration tool, auto IP addressing, provisioning program and continuous commissioning

Note: Add to a **JENE-EG434**, up to a maximum of 8 additional **Onyxx XM** extender modules for up to 68 points (APC-3), 34 points (APC-2).

IP Field/Equipment Controller



JENEsys Edge® 414

niagara⁴

All JENEsys Edge® & JENEsys®
PC-9000 controllers now include
E2E Connector license feature.

JENEsys Edge® 414 is a fully programmable IP **Niagara** controller with 14 IO points and **open NiCS**. It offers reliable performance and **ample memory** for complex applications. Its **small footprint** makes it ideal for space-constrained installations, while its compatibility with BACnet, Modbus, and other protocols ensures seamless connectivity within diverse building environments.

- Full Niagara Stack
- Compact Footprint
- Cost Effective Niagara Integration Solution
- Supports up to 25 controllers on a Single Spanning Tree IP Protocol Network

It is perfect for both retrofit/new build projects, small to mid-sized equipment, and commercial applications (*i.e. retail, hotels, schools, health care clinics, etc.*).

Note: Add to a **JENE-EG414**, up to a maximum of 8 additional **Onyxx XM** extender modules for up to 68 points (APC-3), 34 points (APC-2).

JENEsys Edge® Niagara Controllers (cont'd)

Variable Air Volume Controller



JENEsys Edge® VAV niagara⁴

All JENEsys Edge® & JENEsys®
PC-9000 controllers now include
E2E Connector license feature.

JENEsys Edge® VAV is a fully programmable IP Niagara controller with open NiCS, 14 IO already built-in and one differential press transducer. Using Fox protocol at the IP level provides an additional level of security.

- Integrated Pressure Transducer (*reads VAV duct velocity pressure*)
- No Protocol Conversions Necessary
- Enhanced High-Definition Graphics and UI Interfaces
- Balancing and Continuous Commissioning
- Single-Point Configuration and Addressing
- Supports up to 25 controllers on a Single Spanning Tree IP Protocol Network
- Limited License offers 14 Points and 1 Device (*Cannot be Upgraded*)
- Perpetual Maintenance Included/Supports 10:1 Supervisor License Scheme
- Factory Applications ASHRAE® G36 Standardized Sequences Compliant

It is perfect for both retrofit/new build projects, small to mid-sized equipment, and commercial applications (*i.e. retail, hotels, schools, health care clinics, etc.*).

Note: JENE-EGVAV supports up to 14 points.

JENEsys® Niagara Controller

Niagara Controller (JACE)



JENEsys® PC-9000 niagara⁴

All JENEsys Edge® & JENEsys®
PC-9000 controllers now include
E2E Connector license feature.

JENEsys® PC-9000 is a Niagara embedded IP controller and server platform that helps you connect multiple building automation devices/HVAC sub-systems. It is a traditional Niagara controller and is the de facto industry standard for integration of over 100 legacy communications protocols. Used as an area supervisor or front end, it is a universal controller. It is also capable of stand-alone application control, energy management, and multi-protocol integration.

In larger facilities, multi-building applications, and large-scale control system integrations, Niagara Supervisors can be used with JENE-PC9000 controllers to aggregate information, including real-time data, history, and alarms to create a single, unified application.

Onyxx® Controllers

Configurable Smart Wall Sensor



Onyxx® Wall Module

Onyxx® Wall Module (OWM) is a configurable smart sensor and is designed for ease of installation. Engineered to accompany the **JENEsys Edge®** family of intelligent controllers, it accurately senses **temperature** and **humidity**.

- **ONYXX-WM-T-RH** (Black/White) glass face w/embedded full-touch screen.
- Displays **sensed values, mode, time, and controller status**.
- Change **setpoints/control modes/perform overrides** directly from OWM.
- Provides feedback from VAVs, RTUs, heat pumps, AHUs, terminal units, etc.
- Programmable touch operations: **in/out/up/down buttons, swipes, exclusive levels of access** and **color customization**.
- **Connect up to 4 OWMs to a single Edge device** for multi-room command of indoor climate (*manual discovery is required when connecting multiple OWMs to a single Edge device*).

14 IO Extender Module



Onyxx® XM 14IO Extender Module

Onyxx® XM 14IO has 14 points and native Onyxx and extends the IO for any device that has an Onyxx network. It is designed to provide **maximum performance at minimum cost**.

ONYXX-XM14IO is completely extendable and can be configured to add additional IOs to any **JENEsys Edge®** controller to maximize the edge controller's available licensed points.

Use in smaller systems for project efficiency.

Note: Add to a **JENE-EG534-N4** a maximum of 8 additional **Onyxx XM** extender modules to a JENEsys Edge device.

Onyxx® Controllers (cont'd)

34 IO Extender Module



Onyxx® XM 34IO Extender Module

[Onyxx® XM 34IO](#) is part of Lynxspring's portfolio of hardware, software and tools designed for today's buildings, IoT environments, device-to-enterprise integrations, and machine-to-machine applications.

It has 34 points and native Onyxx and extends the IO for any device that has an Onyxx network. It is designed to provide **maximum performance at minimum cost**.

[ONYXX-XM34IO](#) is completely extendable and can be configured to add additional IOs to any [JENEsys Edge®](#) controller to maximize the edge controller's available licensed points.

Note: Add to a [JENE-EG534-N4](#) a maximum of 8 additional [Onyxx XM](#) extender modules to a JENEsys Edge device.



34 IO BACnet MS/TP Extender Module



Onyxx® XM 34IO-B (BACnet) Extender Module

[Onyxx® XM 34IO-B \(BACnet\)](#) this device integrates seamlessly into a Niagara network.

The [ONYXX-XM34IO-B](#) is a **slave BACnet MS/TP device** with 34 points that is completely extendable and can be configured and daisy-chained in sequence to provide additional IOs to any [JENEsys Edge®](#) controller or a [JENEsys® PC-9000/JACE 9000](#) to maximize the edge controller's available licensed points.



Touch Screen Displays

10.1 Touch Screen Display



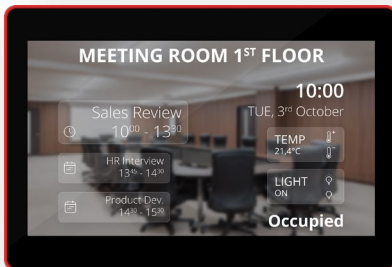
10.1 Inch Smart Touch Screen Display

10.1 Inch Touch Screen Display is an LCD room wall-mounted panel with a LED bar is a versatile and customizable solution for residential and commercial buildings.

Equipped with a 10-point multi-touch screen, the panel offers an exceptional viewing experience. The panel can be used in a variety of scenarios, such as a room management device in hotels, conference rooms, or as a dynamic display in lobbies. The panel offers advanced features, including light and color control, POE power for easy use, and the SmartView app for kiosk mode and remote control.

This display is priced to suit small BMS projects. Display can be used for one site display or one display for multiple controllers. Easy installation with wired or wireless connection options.

13.3 Touch Screen Display



13.3 Inch Smart Touch Screen Display

13.3 Inch Touch Screen Display is an LCD room wall-mounted panel with a LED bar is a versatile and customizable solution for residential and commercial buildings. It is an Android display panel, with a sleek and modern design.

Equipped with a 10-point multi-touch screen, the panel offers an exceptional viewing experience. The panel can be used in a variety of scenarios, such as a room management device in hotels, conference rooms, or as a dynamic display in lobbies. The panel offers advanced features, including light and color control, POE power for easy use, and the SmartView app for kiosk mode and remote control.

This display is priced to suit small BMS projects. Display can be used for one site display or one display for multiple controllers. Easy installation with wired or wireless connection options.

E2E (Edge-to-Enterprise)

OT Data Management/IDL Platform

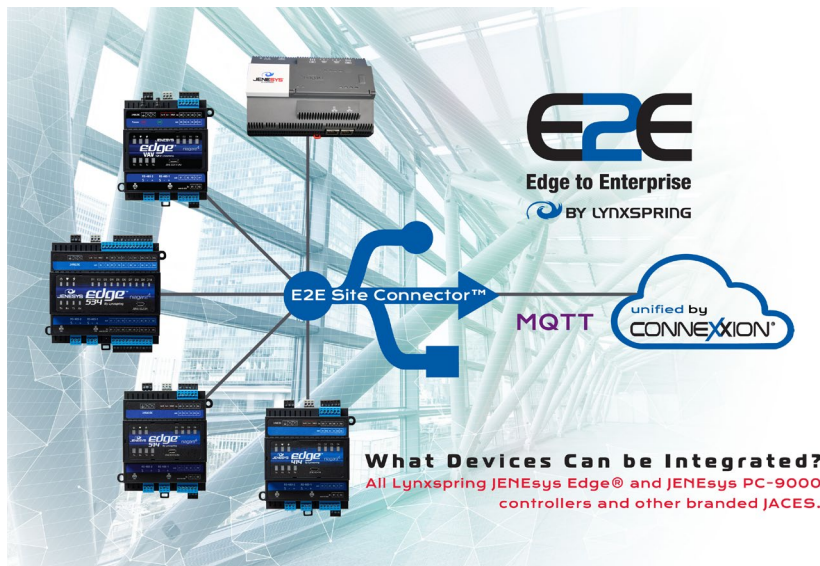


E2E™ (Edge-to-Enterprise) is a centralized operational technology (OT) data management and independent data layer (IDL) platform making building and facility data easily accessible, actionable, and manageable.

At its core, E2E is designed to solve one of the industry's most persistent challenges: turning fragmented, device-level operational data into structured, meaningful, and usable information across systems, platforms, and stakeholders.

Leveraging the power of [Connexxion®](#) and [Haystack tagging](#), E2E simplifies the complexities of organizing, modeling, and exchanging building data between systems. Integrate analytics, energy platforms, digital twins and enterprise applications with ease.

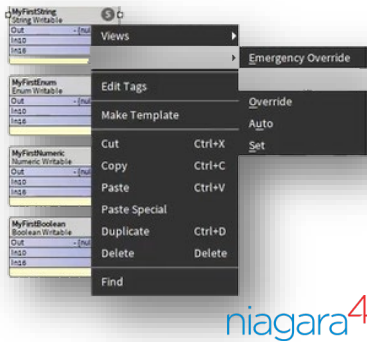
Connect, standardize and streamline your building's OT data with centralized control and data management:



- IDL Supports Multiple Data Types, and Workflows for Normalization/Mapping
- Open API, Scalable and Interoperable
- Haystack Native Data Tagging/Modeling
- Linux and Niagara Integration
- Secure Data Transmission
- Data Governance and SOC 2 Compliance
- Remote Data Analytics/Storage Repository
- Multi-Protocol Support
(BACnet, Modbus, MQTT, REST, OPC UA)

Lynxspring Training Opportunities

[N4 TCP Niagara Certification Training](#)



Lynxspring Niagara Certification

Lynxspring's deep knowledge of Niagara makes us a leading [Niagara 4 Certified Training Partner](#). Our in-house Niagara-certified experts offer a wide range of services to help you succeed.

Help build your skills and master the [Niagara Framework®](#), via:

- Diverse Training Classes (*Onsite & Virtual*)
- Study Materials, Computer-Based Training & Technical Tips

Available Courses:

- [N4 TCP – Niagara 4 Technical Certification](#)
- [N4 TCP – Niagara 4 Technicians Course \(Non-Certification\)](#)
- [N4 TCP – Niagara 4 Technical Certification \(Intermediate Level 2\)](#)
- [JENEsys Edge Product Technical Training](#)
- [JENEsys Edge VAV Technical Training](#)

[Lynxspring Learning Hub](#)



Lynxspring Learning Hub

Lynxspring's [Learning Hub](#) is your destination to master all things Niagara and the **JENEsys Edge®** product line. Our [JENEsys Edge® controllers](#) are the ultimate solution for equipment control and seamless integration. Powered by the [Niagara Framework®](#), these controllers enable you to deliver integrated control, visualization, and powerful functionality to your customers.

With over 20 years of hands-on controls experience and credentials as a certified Niagara Developer, **Charles Johnson**, our lead trainer and technical engineer, brings deep industry knowledge and a passion for educating the next generation of controls professionals.